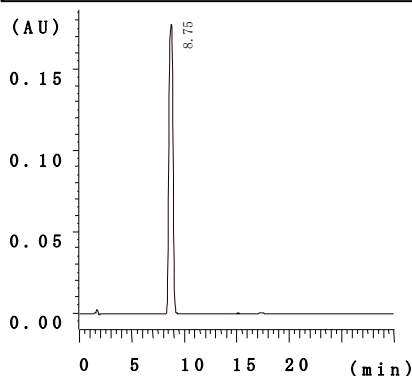


Mightysil RP-18GP

Application Data Vol. 2

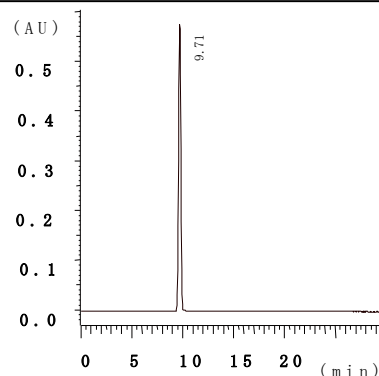


Apigenin



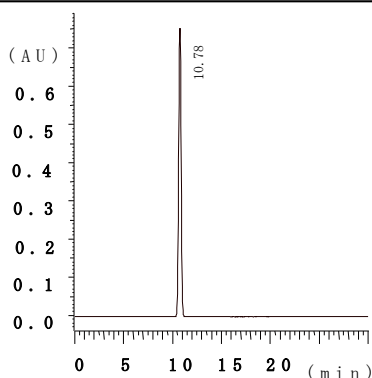
Column : Mightysil RP-18 GP 150-4.6 (5 μ m)
Eluent : CH₃CN/25mM KH₂PO₄ (pH 2.4)=30/70
Flow rate : 1.0 ml/min
Detection : UV 340nm
Col.temp : 40°C
Injection : 50 μ l
Sample : Apigenin 0.02mg/ml

5,6-Benzoflavone



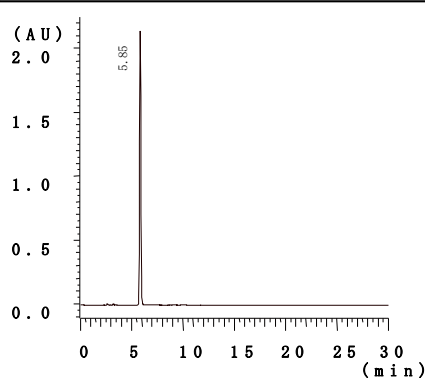
Column : Mightysil RP-18 GP 150-4.6 (5 μ m)
Eluent : CH₃CN/25mM KH₂PO₄ (pH 2.4)=60/40
Flow rate : 1.0 ml/min
Detection : UV 270nm
Col.temp : 40°C
Injection : 10 μ l
Sample : 5,6-Benzoflavone 0.2mg/ml

7,8-Benzoflavone



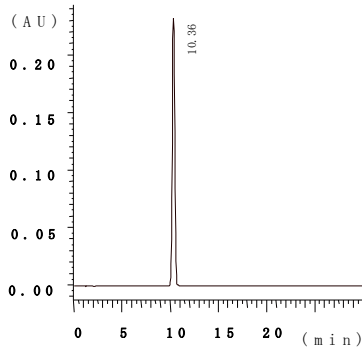
Column : Mightysil RP-18 GP 150-4.6 (5 μ m)
Eluent : CH₃CN/25mM KH₂PO₄ (pH 2.4)=55/45
Flow rate : 1.0 ml/min
Detection : UV 280nm
Col.temp : 40°C
Injection : 10 μ l
Sample : 7,8-Benzoflavone 0.2mg/ml

Biochanin A



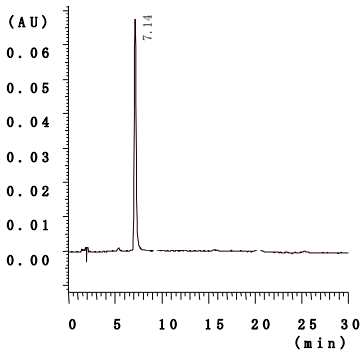
Column : Mightysil RP-18 GP 150-4.6 (5 μ m)
Eluent : CH₃CN/25mM KH₂PO₄ (pH 2.4)=50/50
Flow rate : 1.0 ml/min
Detection : UV 260nm
Col.temp : 40°C
Injection : 5 μ l
Sample : Biochanin A 0.5mg/ml

Chrysin



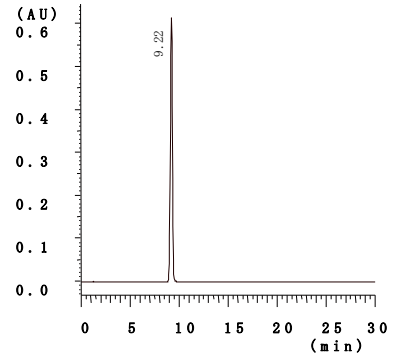
Column : Mightysil RP-18 GP 150-4.6 (5 μ m)
Eluent : CH₃CN/25mM KH₂PO₄ (pH 2.4)=40/60
Flow rate : 1.0 ml/min
Detection : UV 265nm
Col.temp : 40°C
Injection : 5 μ l
Sample : Chrysin 0.1mg/ml

Diosmin



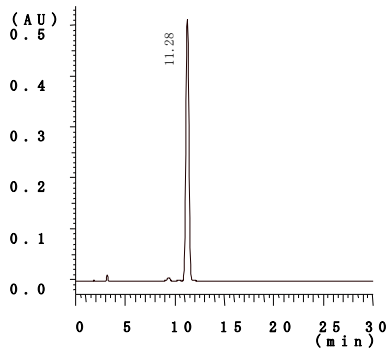
Column : Mightysil RP-18 GP 150-4.6 (5 μ m)
Eluent : CH₃CN/25mM KH₂PO₄ (pH 7.0)=20/80
Flow rate : 1.0 ml/min
Detection : UV 254nm
Col.temp : 40°C
Injection : 5 μ l
Sample : Diosmin 0.1mg/ml

Flavonol



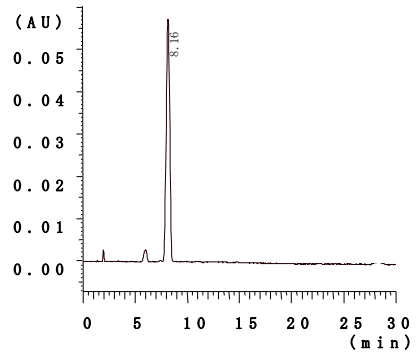
Column : Mightysil RP-18 GP 150-4.6 (5 μ m)
Eluent : CH₃CN/25mM KH₂PO₄ (pH 2.4)=50/50
Flow rate : 1.0 ml/min
Detection : UV 240nm
Col.temp : 40°C
Injection : 10 μ l
Sample : Flavonol 0.2mg/ml

Hesperetin



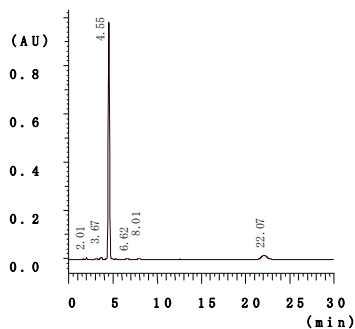
Column : Mightysil RP-18 GP 150-4.6 (5 μ m)
Eluent : CH₃CN/25mM KH₂PO₄ (pH 2.4)=30/70
Flow rate : 1.0 ml/min
Detection : UV 285nm
Col.temp : 40°C
Injection : 5 μ l
Sample : Hesperetin 0.5mg/ml

Hesperidin



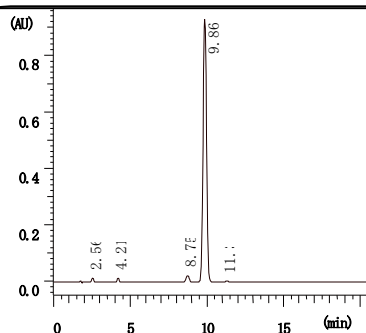
Column : Mightysil RP-18 GP 150-4.6 (5 μ m)
Eluent : CH₃CN/25mM KH₂PO₄ (pH 2.4)=20/80
Flow rate : 1.0 ml/min
Detection : UV 285nm
Col.temp : 40°C
Injection : 10 μ l
Sample : Hesperidin 0.1mg/ml

Isoquercitrin



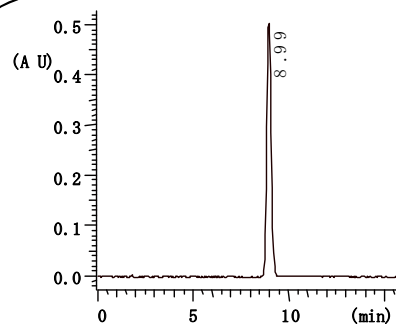
Column : Mightysil RP-18 GP 150-4.6 (5 μ m)
Eluent : CH₃CN/25mM KH₂PO₄ (pH 2.4)=20/80
Flow rate : 1.0 ml/min
Detection : UV 254nm
Col.temp : 40°C
Injection : 5 μ l
Sample : Isoquercitrin 0.5mg/ml

Kaempferol



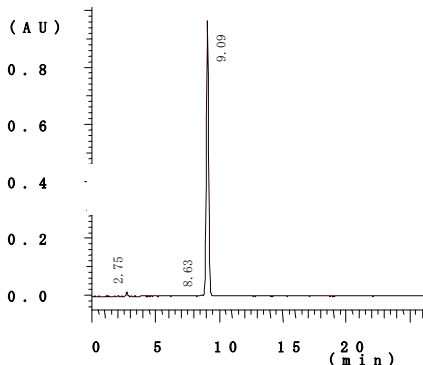
Column : Mightysil RP-18 GP 150-4.6 (5 μ m)
Eluent : CH₃CN/25mM KH₂PO₄ (pH 2.4)=30/70
Flow rate : 1.0 ml/min
Detection : UV 360nm
Col.temp : 40°C
Injection : 20 μ l
Sample : Kaempferol 0.2mg/ml

Luteolin



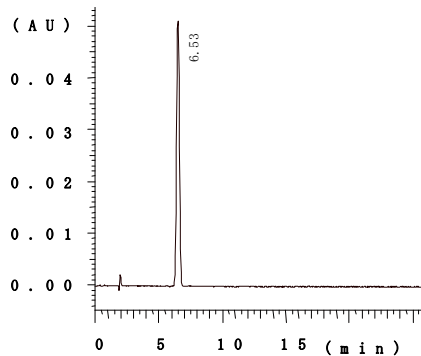
Column : Mightysil RP-18 GP 150-4.6 (5 μ m)
Eluent : CH₃CN/25mM KH₂PO₄ (pH 2.4)=25/75
Flow rate : 1.0 ml/min
Detection : UV 345nm
Col.temp : 40°C
Injection : 20 μ l
Sample : Luteolin 0.1mg/ml

Naringenin



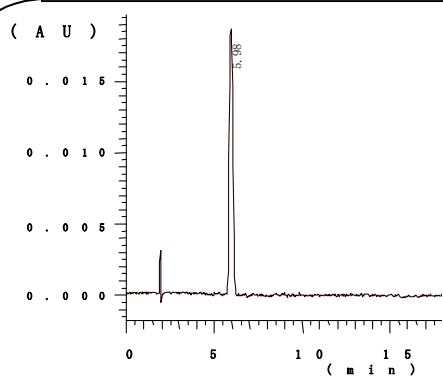
Column : Mightysil RP-18 GP 150-4.6 (5 μ m)
Eluent : CH₃CN/25mM KH₂PO₄ (pH 2.4)=30/70
Flow rate : 1.0 ml/min
Detection : UV 290nm
Col.temp : 40°C
Injection : 20 μ l Chrysin
Sample : Naringenin 0.2mg/ml

Naringin



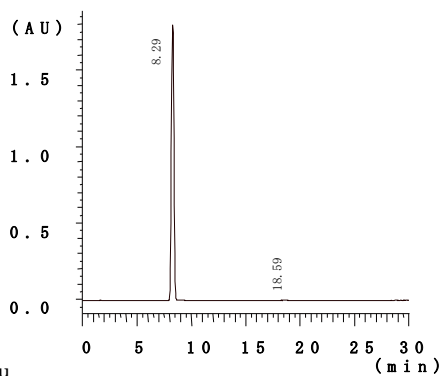
Column : Mightysil RP-18 GP 150-4.6 (5 μ m)
Eluent : CH₃CN/25mM KH₂PO₄ (pH 2.4)=20/80
Flow rate : 1.0 ml/min
Detection : UV 280nm
Col.temp : 40°C
Injection : 10 μ l
Sample : Naringin 0.05mg/ml

Rhoifolin



Column : Mightysil RP-18 GP 150-4.6 (5 μ m)
Eluent : CH₃CN/25mM KH₂PO₄ (pH 2.4)=20/80
Flow rate : 1.0 ml/min
Detection : UV 330nm
Col.temp : 40°C
Injection : 5 μ l
Sample : Rhoifolin 0.03mg/ml

4,2',4'-Trihydroxychalcone



Colu :
Eluent : CH₃CN/25mM KH₂PO₄ (pH 2.4)=35/65
Flow rate : 1.0 ml/min
Detection : UV 370nm
Col.temp : 40°C
Injection : 10 μ l
Sample : 4,2',4'-Trihydroxychalcone 0.5mg/ml