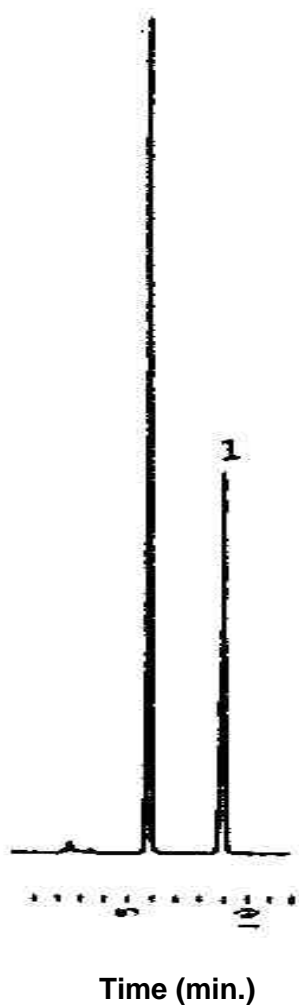


## Separation of Isopropylmethylphenol in Actual Cosmetic Cleanser

Data# B-022



Column	Mightysil RP-18 GP 250-4.6mmØ 5µm
Eluent	Methanol/Water = 3/2
Flow Rate	1.5mL / min.
Detection	UV280nm
Temperature	40°C
Sample Vol.	50µL
Sample	1. Isopropylmethylphenol in actual cosmetic cleanser
Sample preparation	Cosmetic cleanser was dissolved with water and extracted with ethylacetate. After evaporation of ethylacetate, residue was dissolved with eluent.