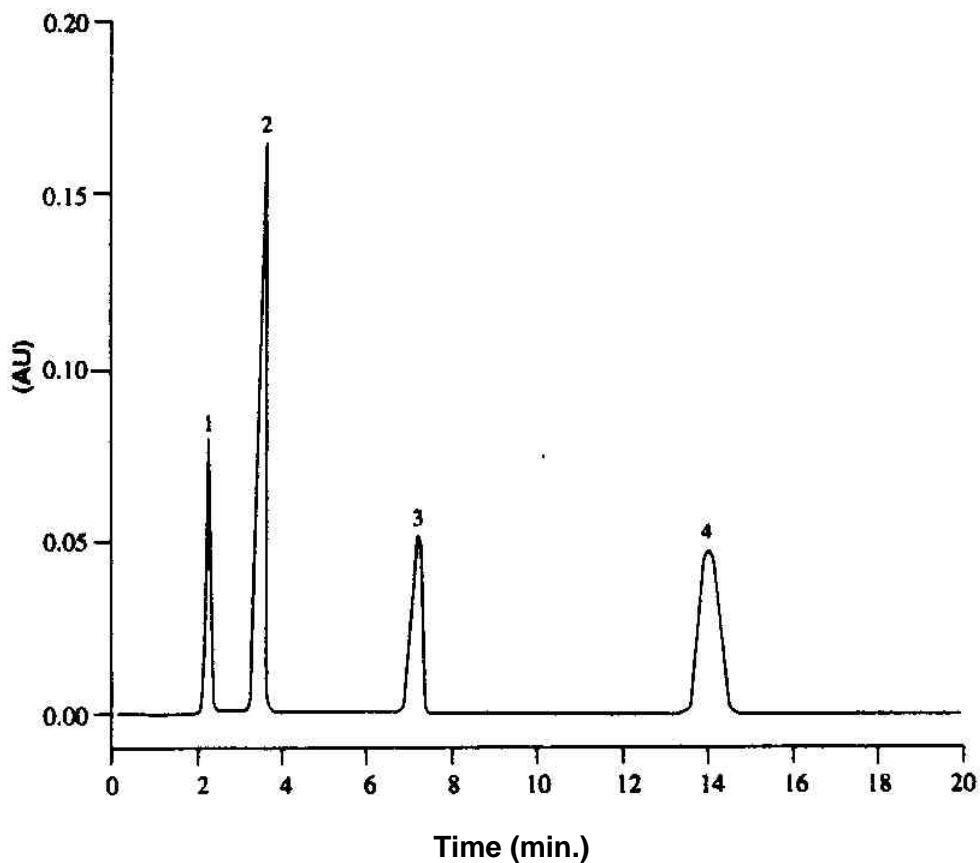


Separation of Ingredients in a Cold Medicine-2

Data# B-026



Column	Mightysil RP-18 GP 150-4.6mmØ 5µm
Eluent	Acetonitrile/20mM Phosphoric acid = 20/80
Flow Rate	1.0mL / min.
Detection	UV254nm
Temperature	40°C
Sample Vol.	5µL
Samples	1. Maleic acid 1.0mg/mL 2. Acetaminophen 0.1mg/mL 3. Caffeine 0.1mg/mL 4. Brompheniramine 1.0mg/mL