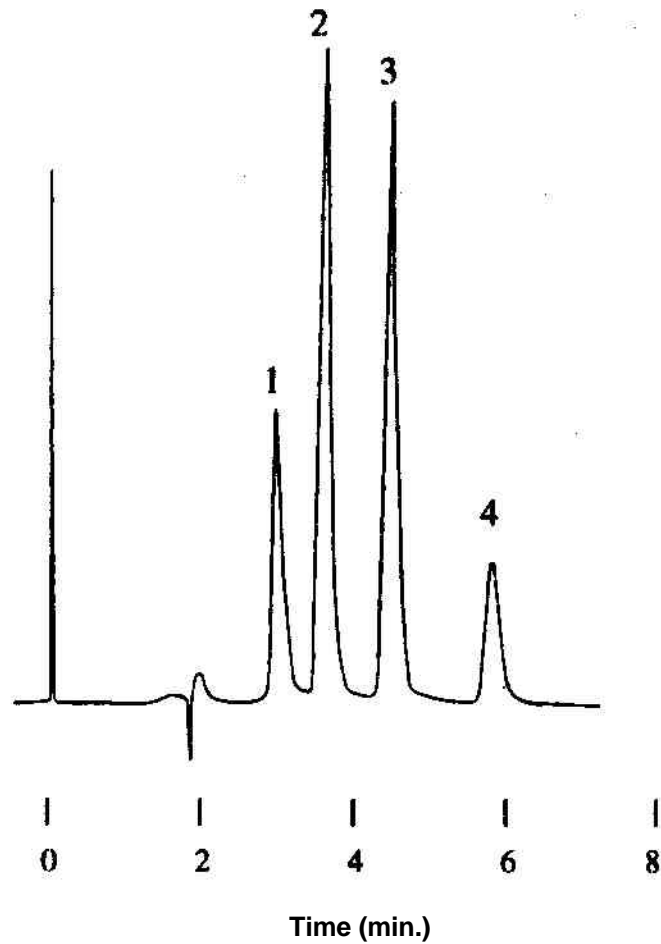


Separation of Basic Fuchsin

Data# B-044



Column	Mightysil RP-18 GP 150-4.6mmØ 5µm
Eluent	Acetonitrile/50mM Potassium dihydrogenphosphate = 35/65
Flow Rate	1.0mL / min.
Detection	UV290nm 0.05AUFS
Temperature	Room Temperature
Sample Vol.	10µL
Samples	1. Pararoseaniline 2. Roseaniline 3. Mazenda 4. Newfuchsine