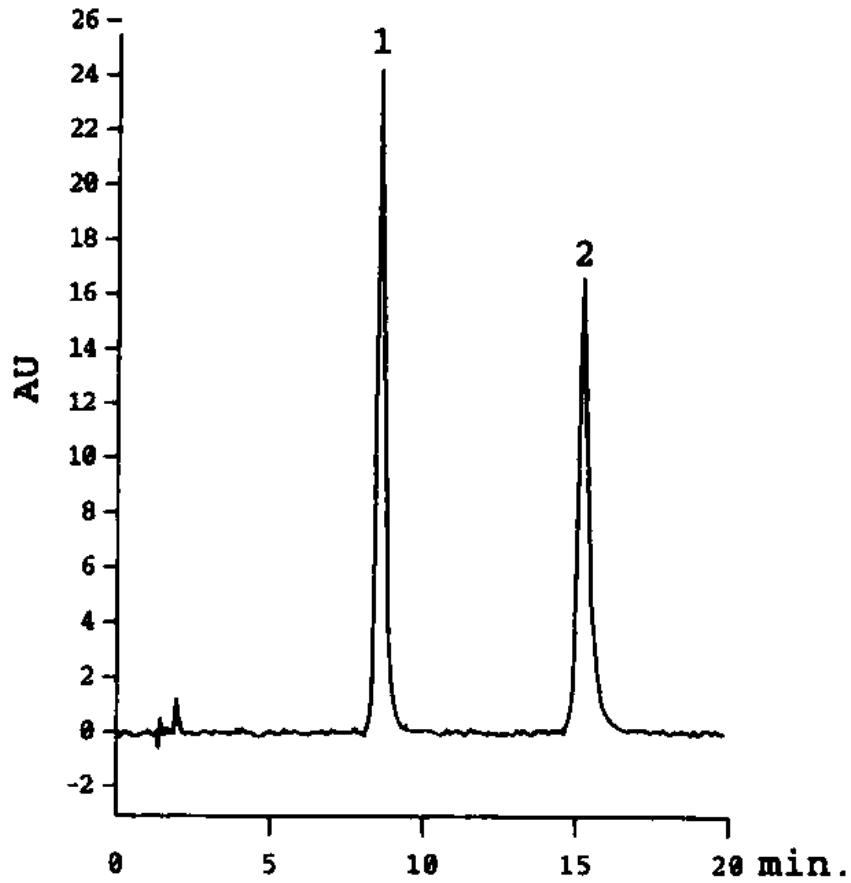


## Separation of Antidepressants

Data# B-051



Column	Mightysil RP-18 GP 150-4.6mmØ 5µm	
Eluent	Methanol / 20mM Phosphate Buffer (pH 5.9) = 55 / 45	
Flow Rate	1.0mL / min.	
Detection	UV254nm	
Temperature	40	
Sample Volume	5µl	
Detected peaks	1. Desipramine hydrochloride	0.1 / mL
	2. Imipramine hydrochloride	0.1mg / mL