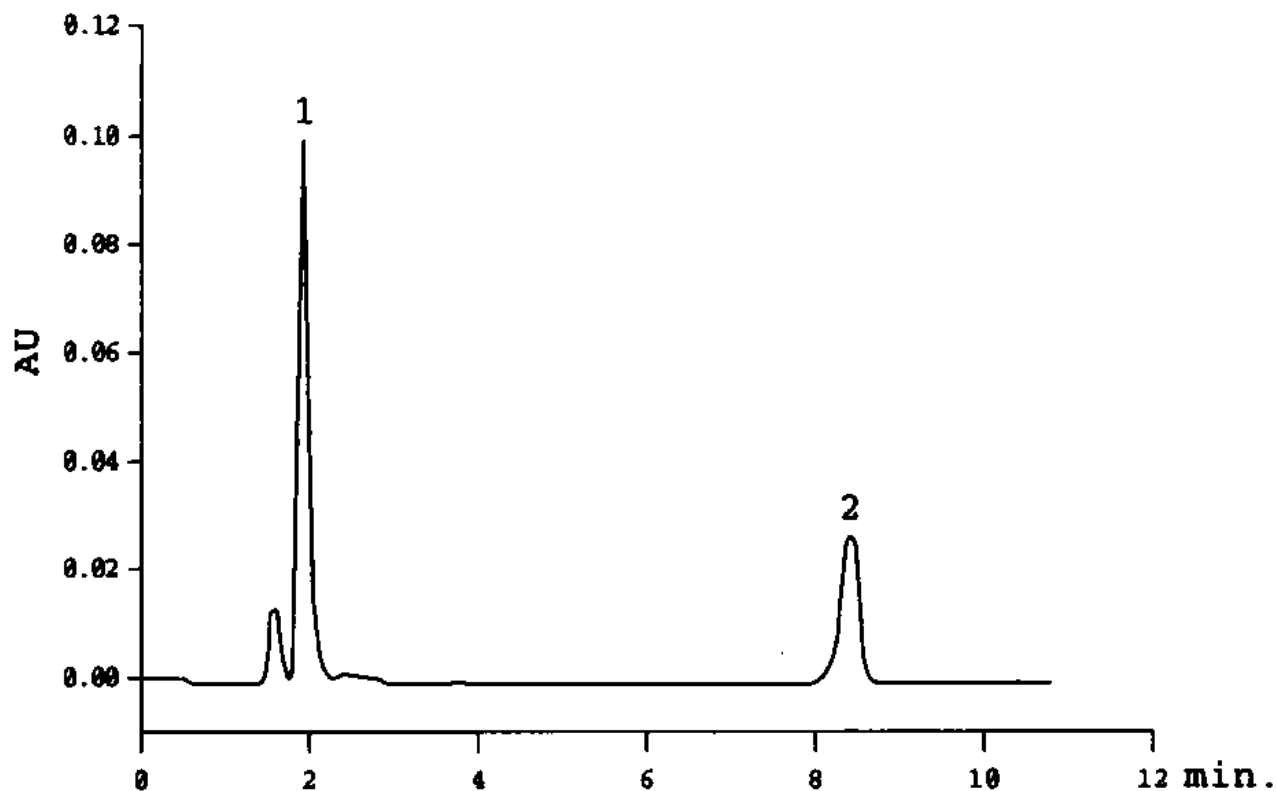


## Separation of L-DOPA and Related Compounds

Data# B-054



Column	Mightysil RP-4 GP 150-4.6mmØ 5µm	
Eluent	25mM KH <sub>2</sub> PO <sub>4</sub> in 3mM Sodium Octanesulfonate (pH3.0) / Acetonitrile = 80 / 20	
Flow Rate	1.0mL / min.	
Detection	UV254nm	
Temperature	40	
Sample Volume	10µl	
Detected peaks	1. Levodopa	0.25 mg / mL
	2. Levodopa n-butylester	0.25 mg / mL