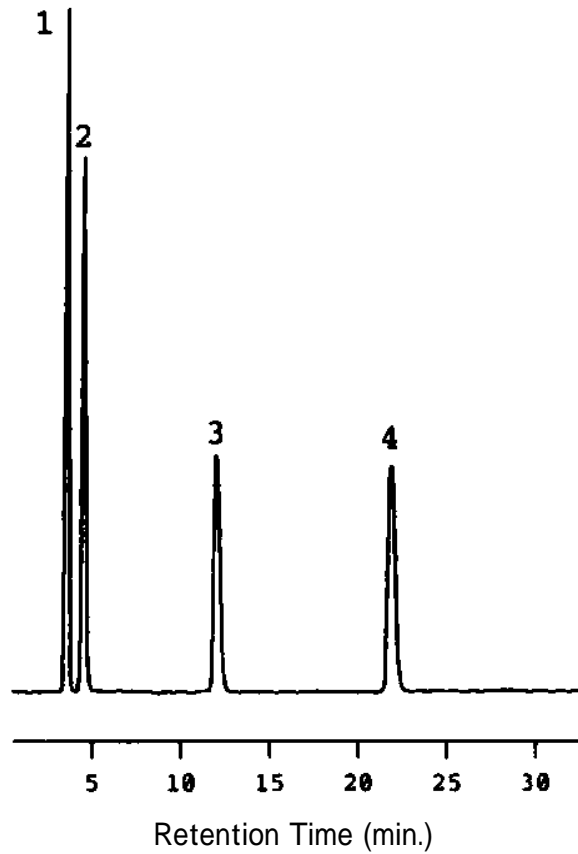


## Separation of Ingredients in a Cold Medicine - 4

Data# B-057



Column	Mightysil RP-18 GP 150-4.6mmØ 5µm	
Eluent	Acetonitrile / 25mM Potassium dihydrogen phosphate = 90 / 10	
Flow Rate	1.0mL / min.	
Detection	UV280nm	
Temperature	40	
Sample Volume	5µl	
Detected peaks	1. Acetaminophene	1.4 mg / mL
	2. Caffeine	0.35 mg / mL
	3. Tipepidine hibenzate	0.3 mg / mL
	4. Ethenzamide	1.5 mg / mL