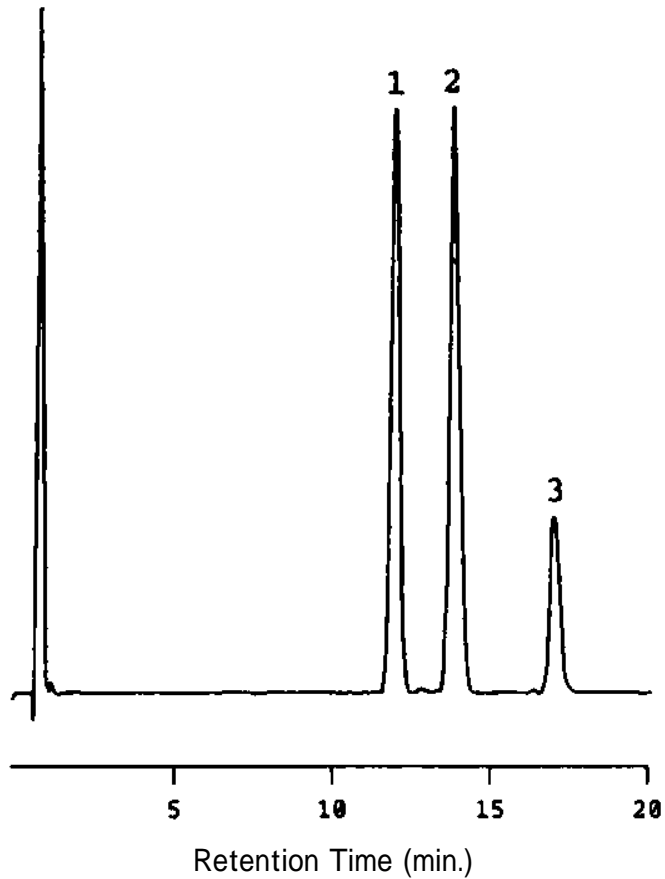


## Separation of Ingredients in a Cold Medicine - 6

Data# B059



Column	Mightysil RP-18 GP 150-4.6mmØ 5µm	
Eluent	Acetonitrile / 10mM Potassium dihydrogen phosphate (adjusted pH to 2.3 with phosphoric acid) = 45 / 55, containing 2.5 mg/mL Sodium dodecyl sulfate	
Flow Rate	1.6mL / min.	
Detection	UV220nm	
Temperature	35	
Sample Volume	20µl	
Detected peaks	1. Tipepidine citrate	102 µg / mL
	2. Dextromethorphan hydrobromide	100 µg / mL
	3. Chlorpheniramine maleate	27 µg / mL