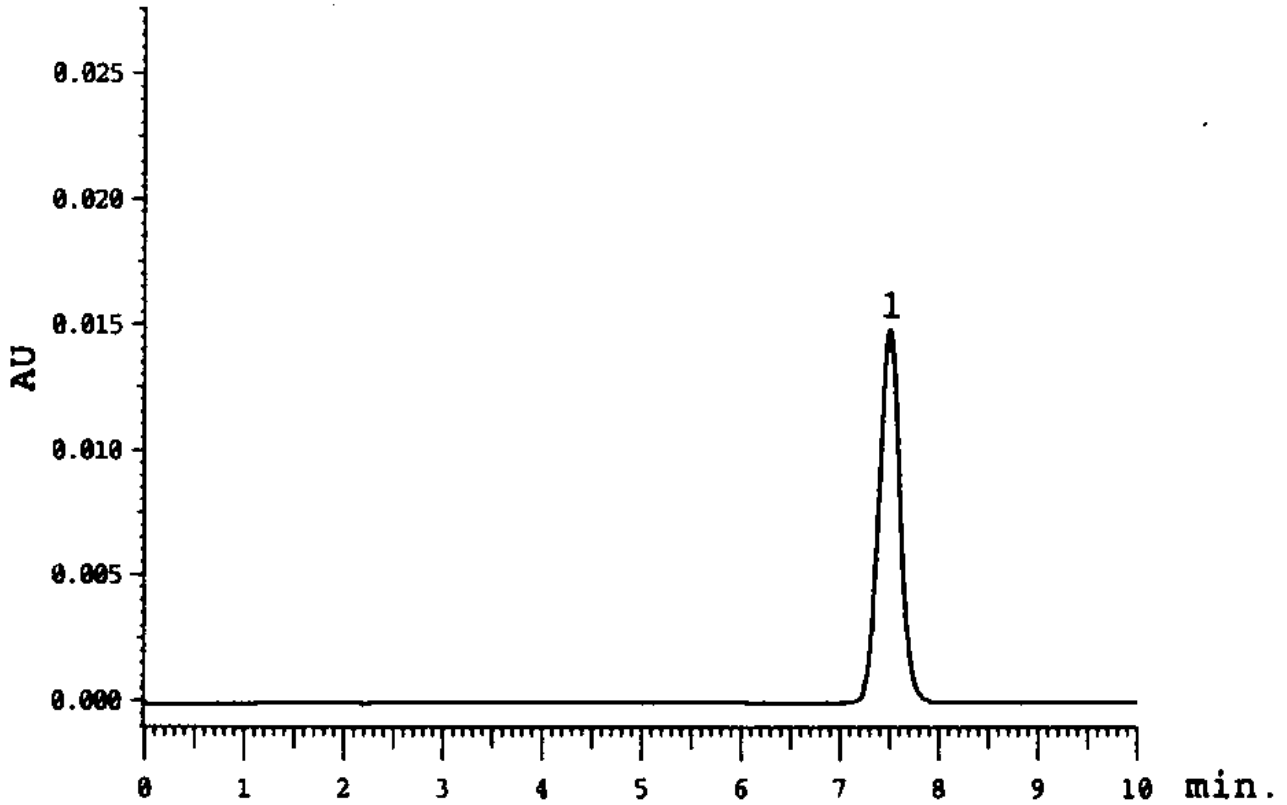


## Separation of Indomethacin

Data# B-093



Column	Mightysil RP-18 GP 150-4.6mmØ 5µm
Eluent	Methanol / 0.1% (v/v) Phosphoric acid = 70 / 30
Flow Rate	1.2mL / min.
Detection	UV254nm
Temperature	28 (Room temperature)
Sample Volume	20µl
Detected peaks	1. Indomethacin 50 µg / mL