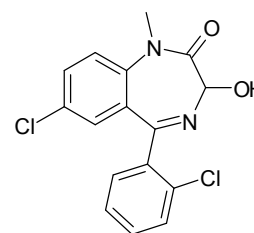
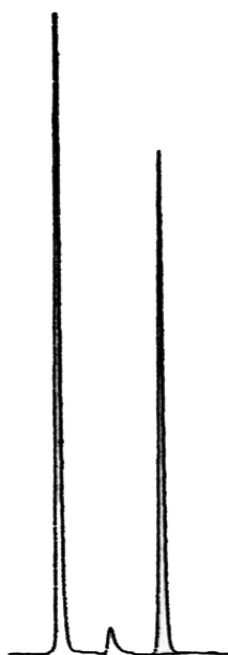


Mightysil Application DATA

Separation of Lormetazepam

Data# B-110



1 1.1 1.2 1.3 1.4 1.5 1.6

Time (min.)

Column	Mightysil RP-18GP 150-4.6, 5 μ m
Eluent	Methanol/ Water= 13/ 7
Flow Rate	1.0mL/min
Detection	UV231nm
Temperature	40°C
Sample Vol.	50 μ L
Sample	Lormetazepam (1 μ g/mL)



Kanto Kagaku