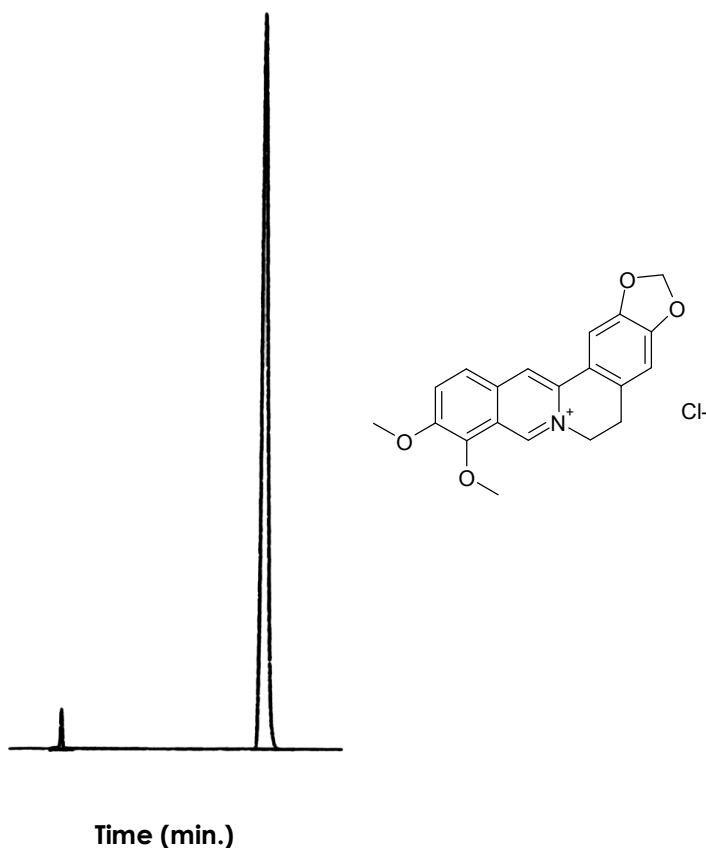


Mightysil Application DATA

Separation of Berberine chloride

Data# B-112



Column	Mightysil RP-18GP 150-6, 5 μ m
Eluent	25mM KH ₂ PO ₄ including 1.7g Sodium dodecylsulfate/ Acetonitrile= 11/ 9
Flow Rate	1.2mL/min
Detection	UV345nm
Temperature	40°C
Sample Vol.	20 μ L
Sample	Berberin chloride (100 μ g/mL) 11.4min



Kanto Kagaku