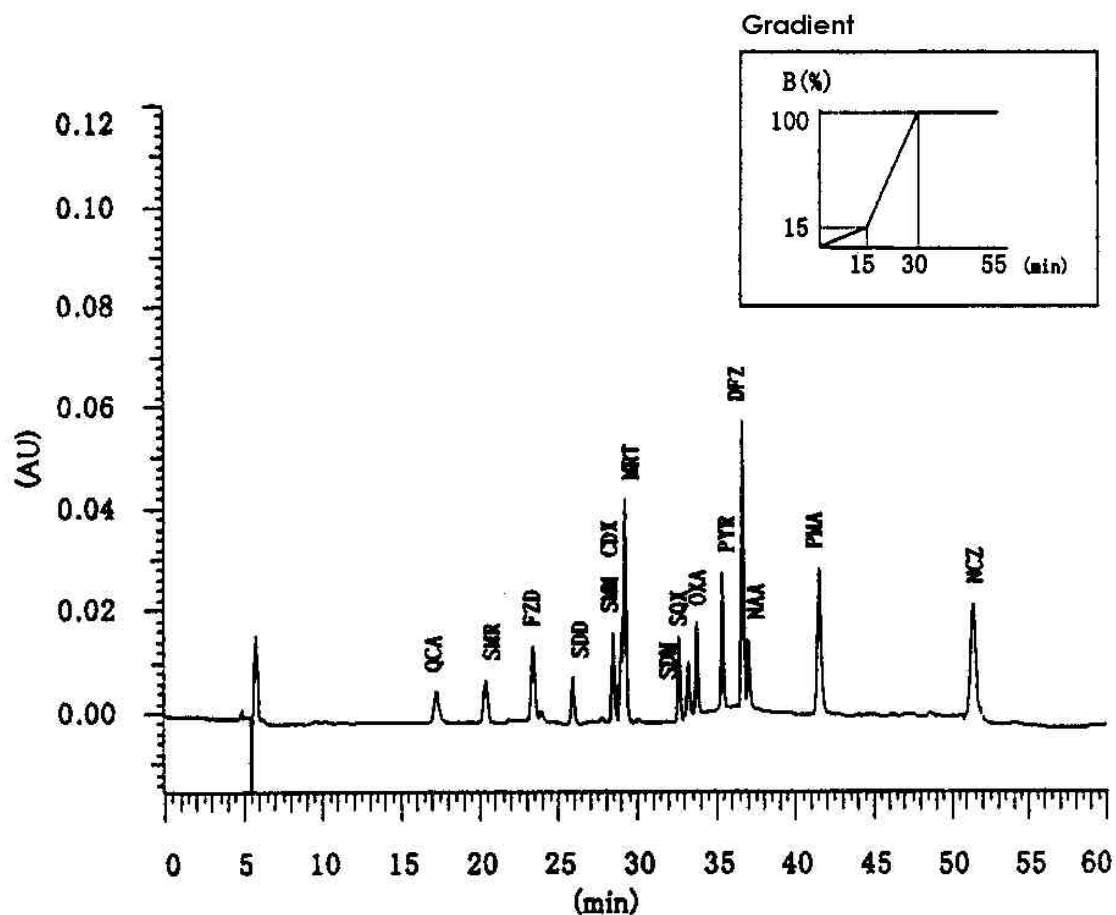


Separation of 15 Synthetic Antibiotics

Data# E-010



Column	Mightysil RP-18 GP 250-4.6mmØ 5µm		
Eluent	A: Methanol/25mM Potassium dihydrogenphosphate = 15/85 B: Methanol/25mM Potassium dihydrogenphosphate = 70/30		
Flow Rate	0.5mL / min.		
Detection	Maximum wavelength detected by photodiode-array		
Temperature	40°C		
Sample Volume	20µL		
Samples	QCA: 2-Quinoxaline carboxylic acid SMR: Sulfameradin FZD: Furazolidone SDD: Sulfadimidine SMM: Sulfamonomethoxine	CDX: Carbadox MRT: Morantel SDM: Sulfadimethoxine SQX: Sulfaquinoxaline OXA: Oxolinic acid	PYR: Pyrimethamine DFZ: Difurazone NAA: Nalidixic acid PMA: Piromidic acid NCZ: Nicarbazin