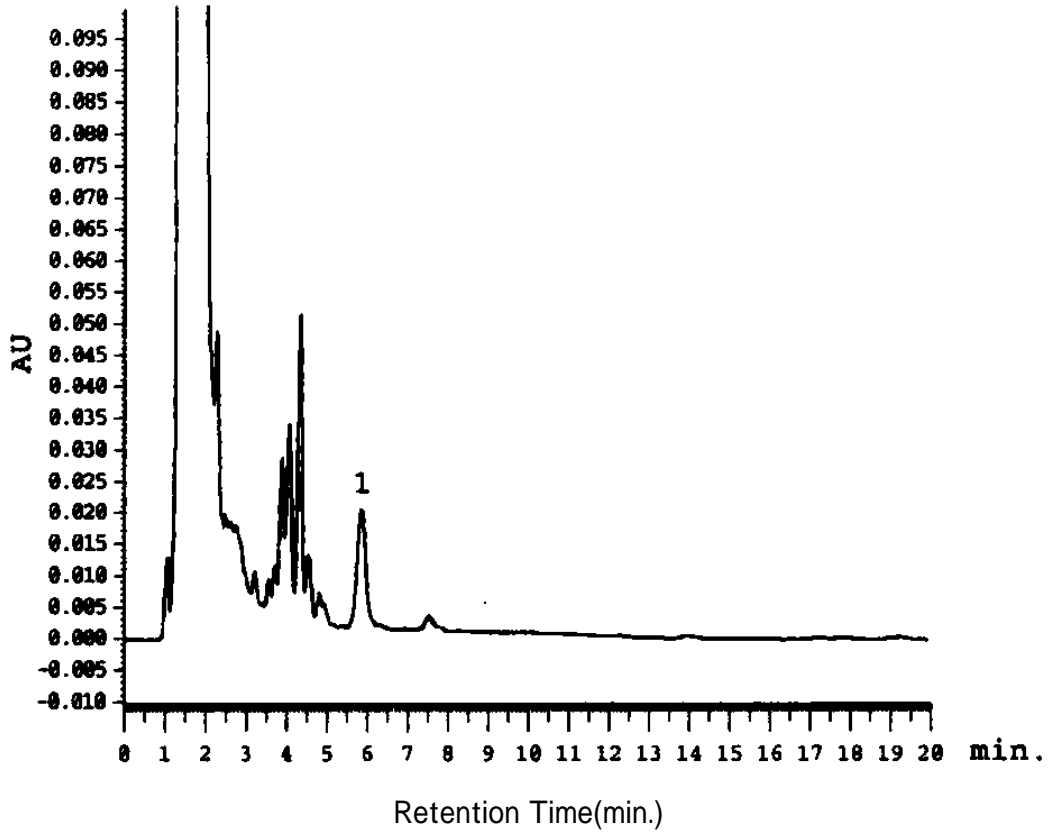


Separation of Imazalil in Concentrated Lemonade Juice

Data# E-033



Column	Mightysil RP-18 GP 150-4.6mmØ 5µm	
Eluent	Methanol / 20mM Na ₂ HPO ₄ · 2H ₂ O = 3 / 1	
Flow Rate	1.0mL / min.	
Detection	UV230nm	
Temperature	40°C	
Sample Volume	20µl	
Detected peaks	1. Imazalil	5mg / ml in Lemonade Juice