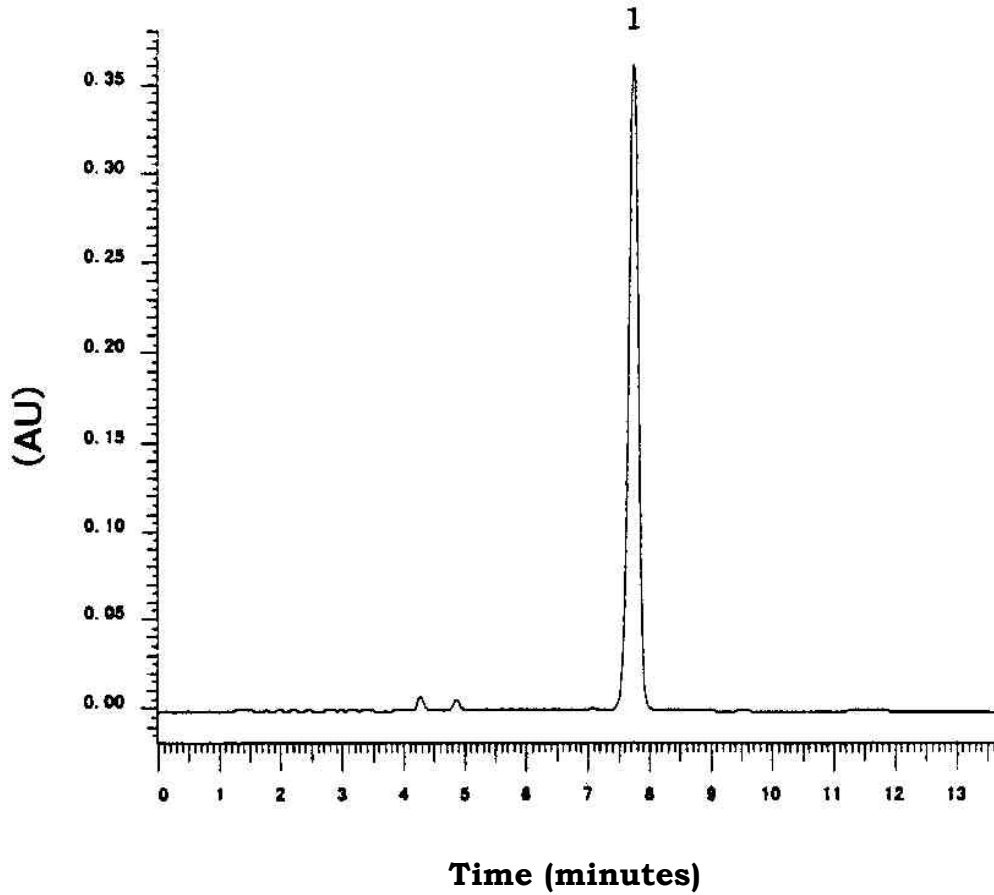


# Separation of Albendazole

Data# F-023



Column	Mightysil RP-18 GP 150-4.6mmØ 5µm
Eluent	Acetonitrile/25mM Sodium dihydrogenphosphate = 4/6
Flow Rate	1.0mL / min.
Detection	UV220nm 0.35AUFS
Temperature	40°C
Sample Volume	20µL
Sample	1. Albendazole 0.01mg/mL