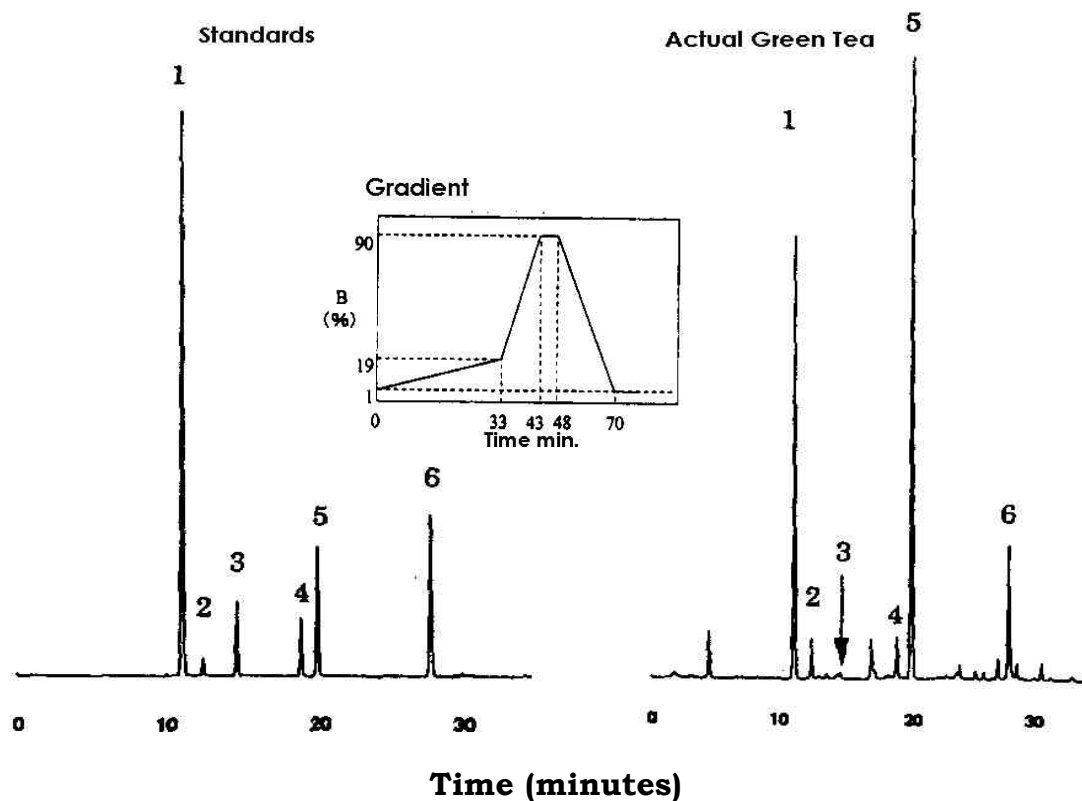


Separation of Caffeine and Catechins

Data# F-053



| | |
|----------------|--|
| Column | Mightysil RP-18 GP 150-4.6mmØ 5µm |
| Eluent | A: 0.1% Phosphoric acid including 5% of N,N-Dimethylformamide and 0.1% of Acetonitrile B: Acetonitrile |
| Flow Rate | 1.0mL / min. |
| Detection | UV280nm 0.08AUFS |
| Temperature | 43°C |
| Sample Volume | 5µL (Standards), 3µL (Actual sample): Extracted with mixture of Acetonitrile and Water |
| Detected peaks | 1. Caffeine 0.1mg/mL in STD. 2. Epigallocatechin 0.05mg/mL in STD. 3. Catechin 0.05mg/mL 4. Epicatechin 0.05mg/mL in STD. 5. Epigallocatechin Gallate 0.05mg/mL in STD 6. Epicatechin Gallate 0.05mg/mL in STD. |