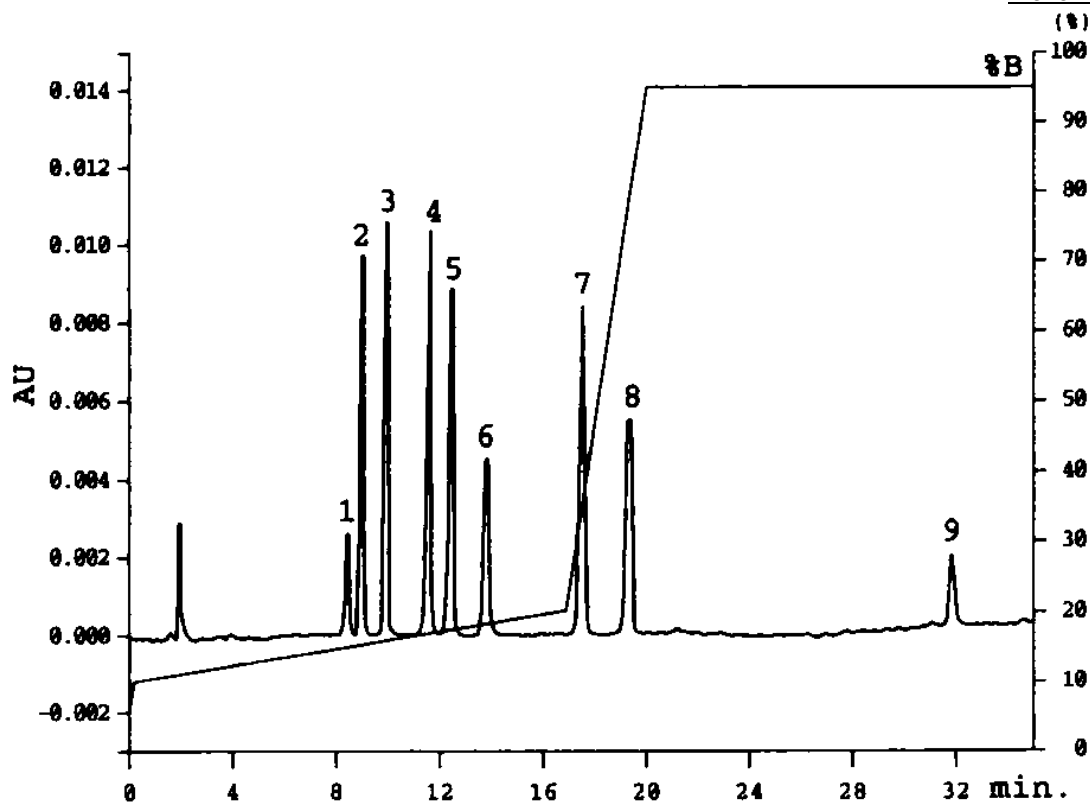


## Separation of Catechins, Caffeine, Chlorophyll A

Data# F-056



Column	Mightysil RP-18 GP 150-4.6mmØ 5µm					
Eluent	A: 1% Phosphoric acid, B : Ethanol					
	Time (min.)	0	0.1	17	20	35
	A	95	90	80	5	5
	B	5	10	20	95	95
Flow Rate	1.0mL / min.					
Detection	0~21min. : UV280nm, 21~35min.: UV430nm					
Temperature	40°C					
Sample Volume	5µl					
Detected peaks	1. Epigallocatechin	20µg/ml	6. Gallocatechin gallate	6µg/ml		
	2. Catechin	20µg/ml	7. Epicatechin gallate	8µg/ml		
	3. Caffeine	4µg/ml	8. Catechin gallate	6µg/ml		
	4. Epicatechin	20µg/ml	9. Chlorophyll a	6µg/ml		
	5. Epigallocatechin gallate	10µg/ml				