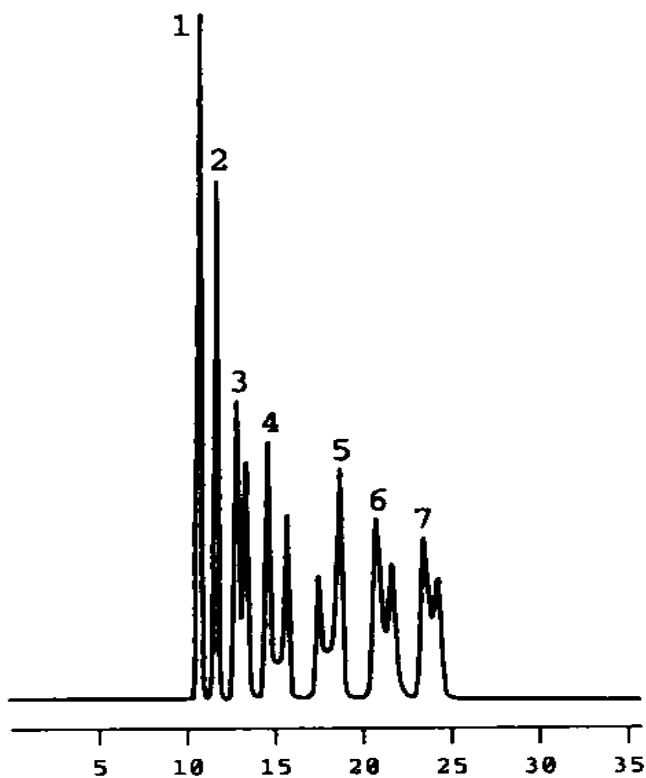


## Separation of Oligosaccharide

Data# F-066



Column	Mightysil RP-18 GP Aqua 250-4.6mmØ 5µm
Eluent	100% Water
Flow rate	0.25 ml / min.
Detection	RI
Temperature	35°C
Sample Volume	5µl
Detected peaks	1. Glucose 2. Maltose 3. Maltotriose 4. Maltotetraose 5. Maltopentaose 6. Maltohexaose 7. Maltoheptaose (Each 1.0mg/ml)