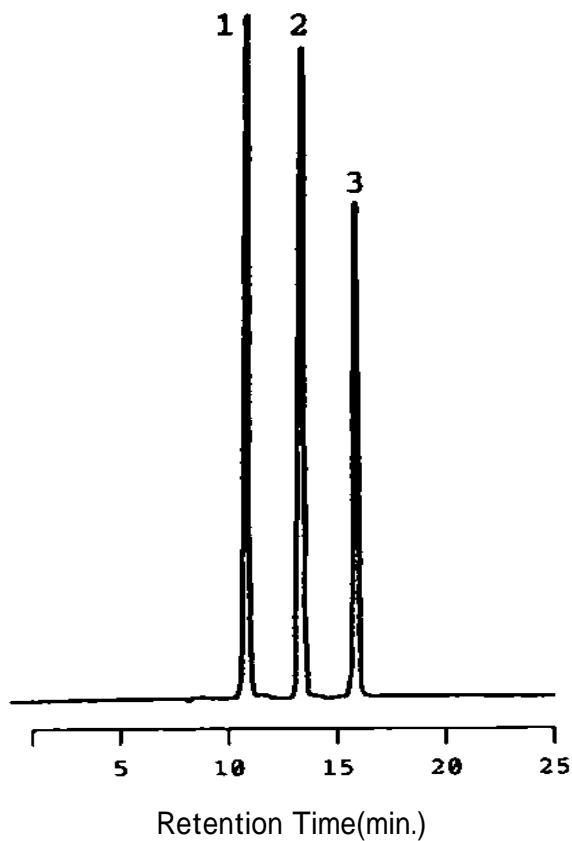


Separation of Carbohydrates

Data# F-068



| | | |
|----------------|--|-----------|
| Column | Mightysil RP-18 GP Aqua 250-4.6mmØ 5µm | |
| Eluent | 100% Water | |
| Flow rate | 0.25 ml / min. | |
| Detection | RI | |
| Temperature | 35°C | |
| Sample Volume | 5µl | |
| Detected peaks | 1. Glucose | 1.0 mg/ml |
| | 2. Sucrose | 1.0 mg/ml |
| | 3. Raffinose | 1.0 mg/ml |