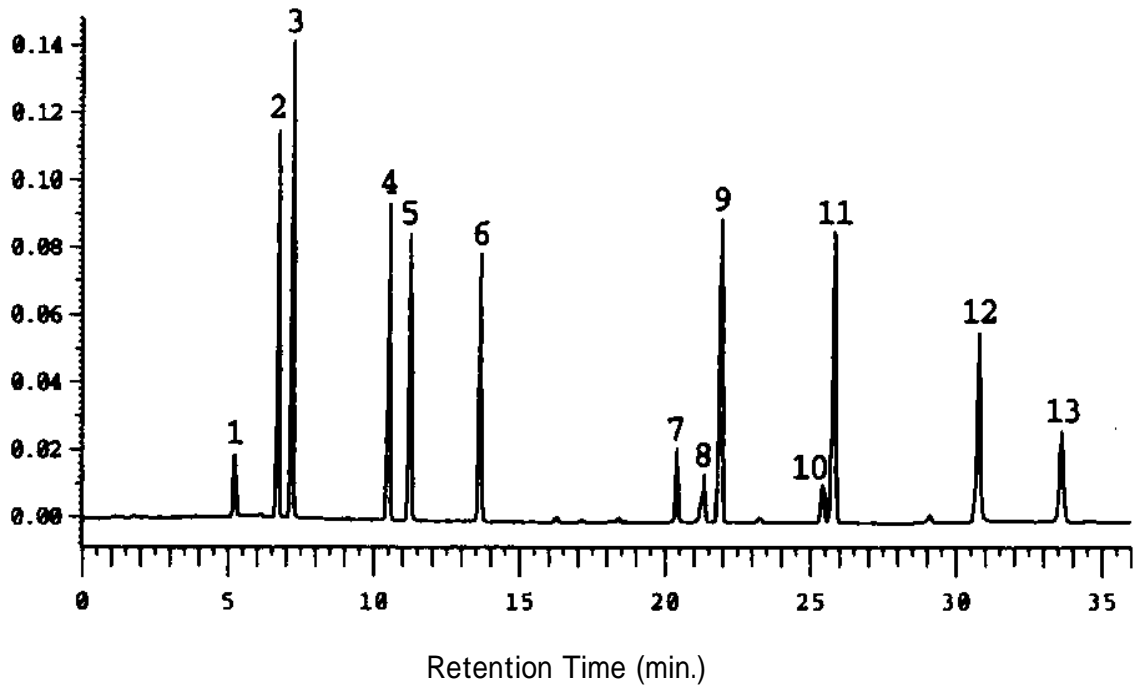


Separation of Food Dyes - 6

Data# F-072



Column	Mightysil RP-18 GP 150-4.6mmØ 5µm	
Eluent	A: Methanol / Acetonitrile / Water = 3 / 3 / 4 Containing Ammonium acetate solution(5g / 100ml) B: Ammonium acetate solution(5g / 100ml) Gradient : 0~30min. : A5%-A100% Linear, 30~36min.: A100%, 36.1~50min.: A5%	
Flow rate	1.4 ml / min.	
Detection	UV254nm	
Temperature	40°C	
Sample Volume	20µl	
Detected peaks	1. Tartrazine 2. Amaranth 3. Indigocarmine 4. New Coccine 5. Sunset Yellow FCF 6. FD&C Red No.40 7. Fast Green FCF	8. Brilliant Blue FCF 9. Eosin 10. Erythrosine 11. Acid Red 12. Phloxine 13. Rose Bengal (Each Sample: 20µg/ml)