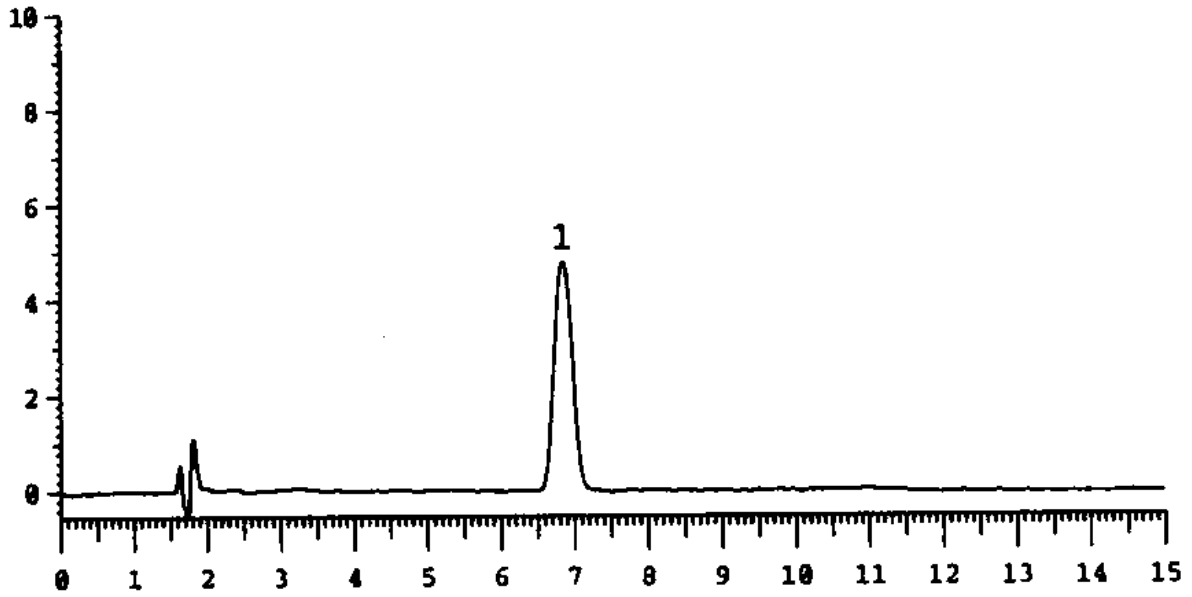


Separation of Cyclamic acid

ata# F-076



Retention Time (min.)

Column	Mightysil RP-18 GP 150-4.6mmØ 5µm
Eluent	Methanol / water = 80 / 20
Flow rate	1.0 ml / min.
Detection	UV314nm
Temperature	40°C
Sample Volume	20µl
Detected peaks	1. Cyclamic acid 20 µg/ml