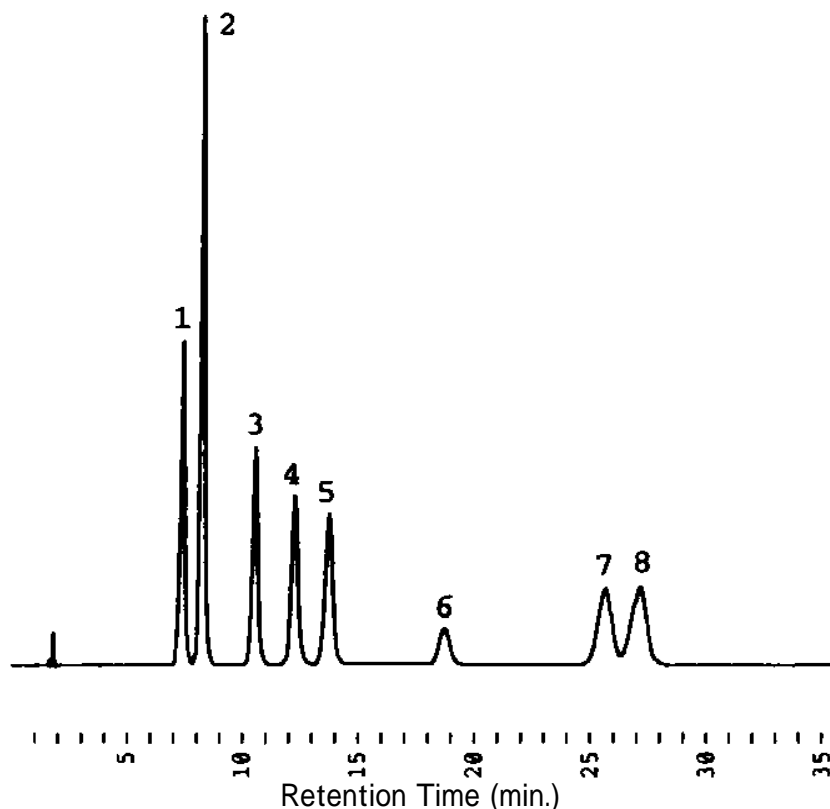


Separation of Presevatives - 5

Data# F-077



Column	Mightysil RP-8 GP 150-4.6mmØ 5µm	
Eluent	Ethanol / 50mM Sodium dihydrogen phosphate dehydrate = 34 / 66, containing 2mM Cetyltrimethylammonium bromide (pH4.41). pH is adjusted by addition of 10% Phosphoric acid, after mixing the components of eluent.	
Flow rate	1.0 ml / min.	
Detection	UV240nm 0.32AUFS	
Temperature	45°C	
Sample Volume	5µl	
Detected peaks	1. Ethyl p-hydroxybenzoate	0.1 mg/ml
	2. Sorbic acid	0.1 mg/ml
	3. Benzoic acid	0.1 mg/ml
	4. Isopropyl p-hydroxybenzoate	0.1 mg/ml
	5. Propyl p-hydroxybenzoate	0.1 mg/ml
	6. Saccharin	0.1 mg/ml
	7. Isobutyl p-hydroxybenzoate	0.1 mg/ml
	8. Butyl p-hydroxybenzoate	0.1 mg/ml