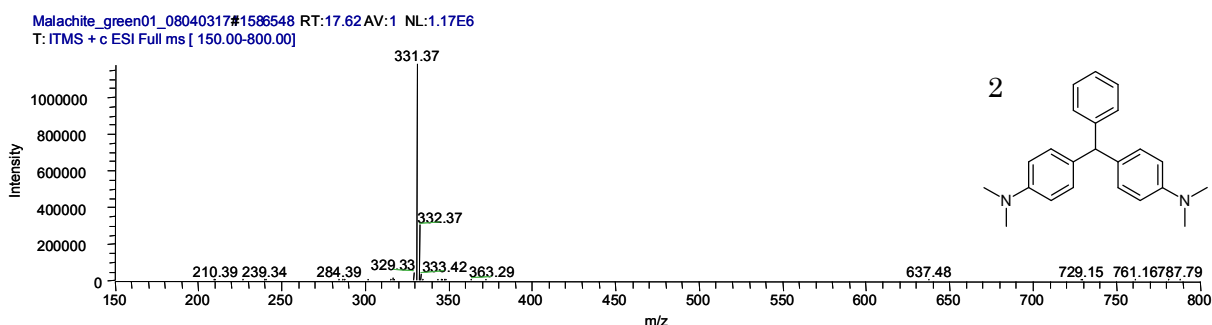
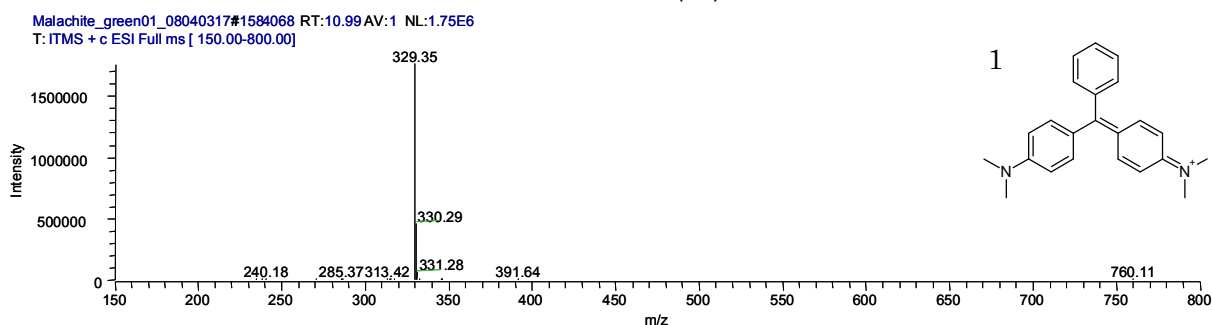
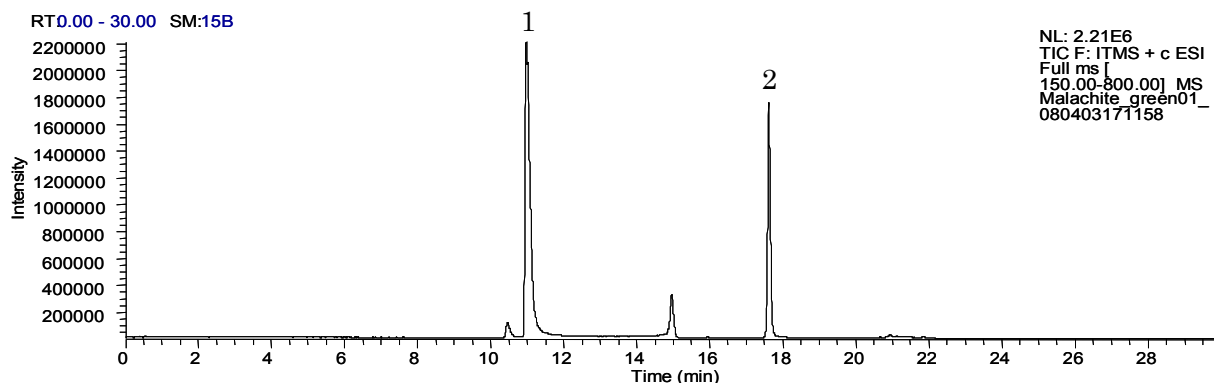


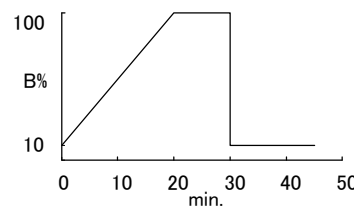
# Mightysil Application DATA

## Separation of Malachite green and Leucomalachite green by LC/MS

Data# F-000



|             |   |
|-------------|---|
| Column      | Mightysil RP-18MS 150-2.0mmØ 5µm                                  |
| Eluent      | A: 0.01mol/L Ammonium formate<br>B: Acetonitrile                  |
| Flow rate   | 0.2mL/min.  |
| Detection   | MS ESI+   |
| Temperature | 40°C  |
| Sample Vol. | 2µL   |
| Samples     | 1. Malachite green 0.05mg/mL<br>2. Leucomalachite green 0.05mg/mL |



Kanto Kagaku