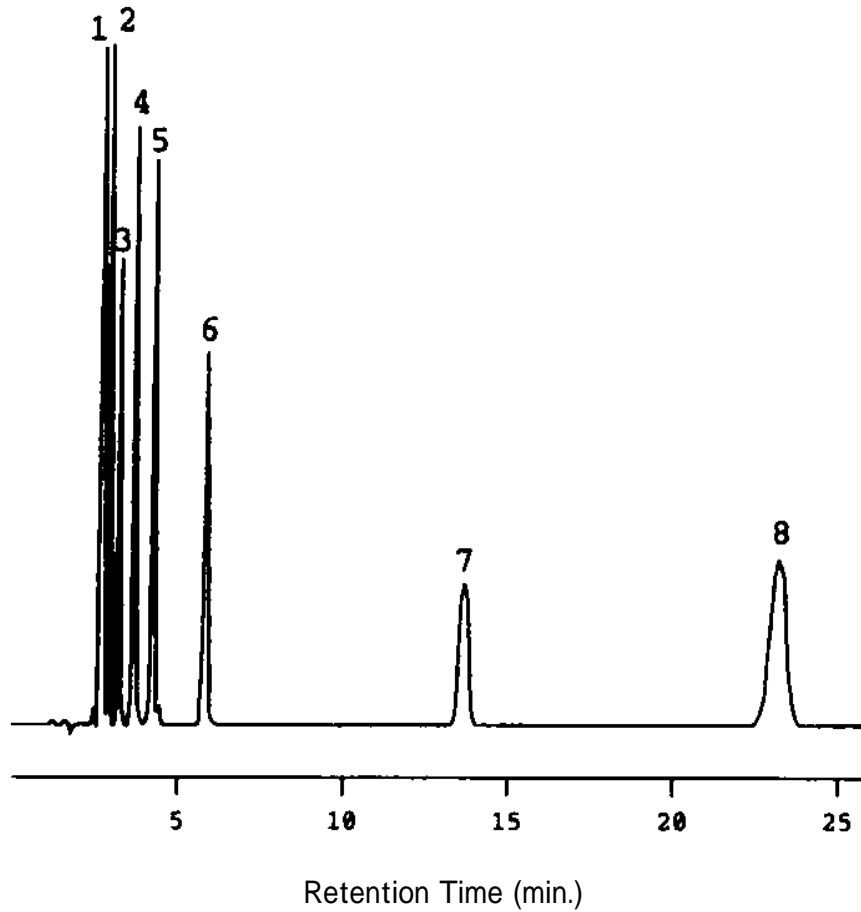


Elution pattern of Aromatics

Data# S-018



Column	Mightysil RP-18 GP 150-4.6mmØ 5µm		
Eluent	Acetonitrile / Water / Acetic acid = 45 / 55 / 1		
Flow Rate	1.0mL / min.		
Detection	UV254nm		
Temperature	40		
Sample Volume	15µl		
Detected peaks	1. Benzylalcohol	4.0 mg/mL	6. p-Toluyaldehyde 0.06 mg/mL
	2. Benzoic acid	1.0 mg/mL	7. Toluene 3.0 mg/mL
	3. Methylbenzylalcohol	4.0 mg/mL	8. p-Xylene 6.0 mg/mL
	4. p-Toluic acid	0.2 mg/mL	
	5. Benzaldehyde	0.1 mg/mL	