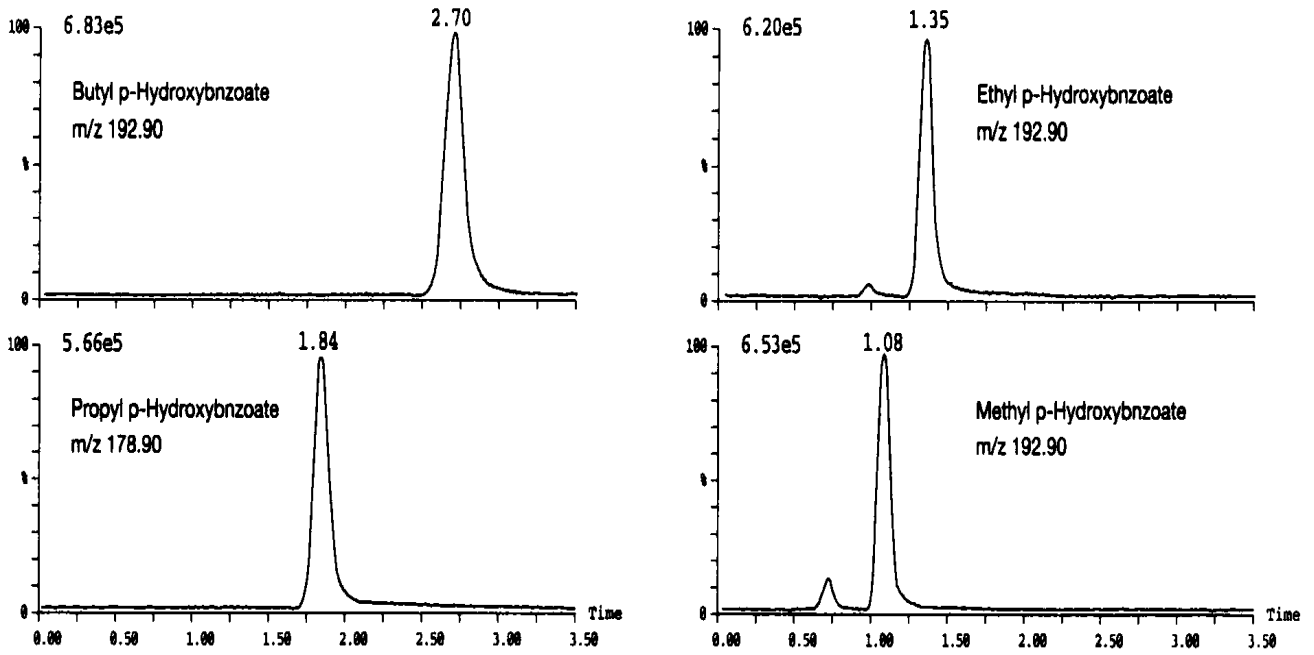


## Elution pattern of Parabens with LC/MS

Data# S-020



Column	Mightysil RP-18 GP 50-2mmØ 5µm	
Eluent	Acetonitrile / Water = 50 / 50	
Flow Rate	0.2mL / min.	
Detection	ESI Negative, SIR Mode, Capillary 4.00KV	
Temperature	40	
Detected peaks	1. Butyl p-hydroxybenzoate	25 µg / mL
	2. Ethyl p-hydroxybenzoate	15 µg / mL
	3. Methyl p-hydroxybenzoate	14 µg / mL
	4. Propyl p-hydroxybenzoate	10 µg / mL